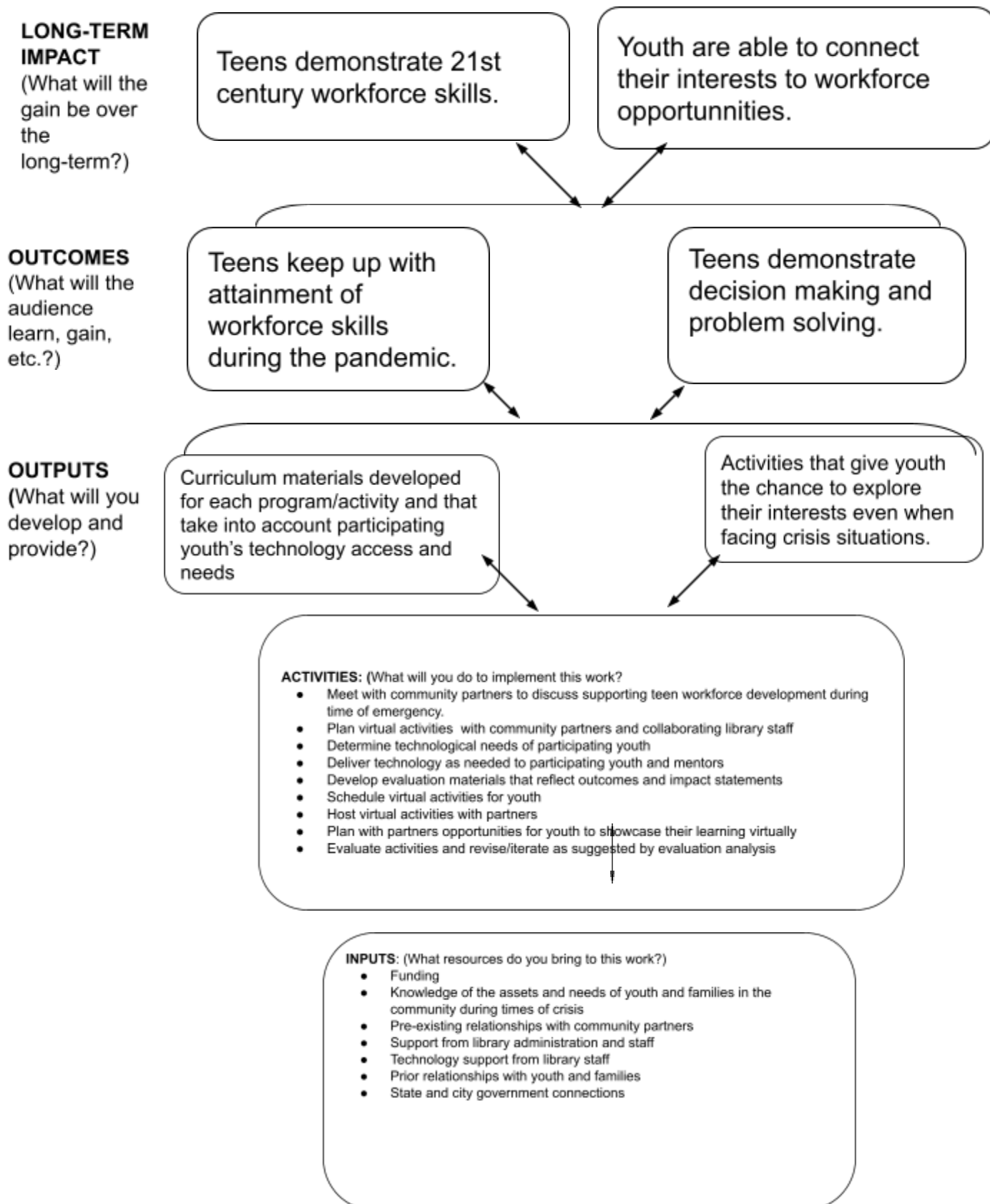


Providence Public Library Logic Model Teen Squad: During Crisis Time

Program:
Goal:



There are many different formats used to create logic models and this is just one example. Keep in mind that logic models:

- Reflect a path to achieve outcomes identified as necessary for the local community.
- Is developed by starting with impact, outcomes, and resources and then filling in activities and outputs that lead to those.
- Can be used to chart out activities for different audiences including library staff as well as youth, families, adults, and so on.
- Often include different levels of outcomes - short-term, intermediate, and long term outcomes/impact
- Are not meant to be developed in a vacuum, information used to determine all aspects of a logic model should come from a variety of sources, assessments, and synthesis.
- Should be reviewed and revised on a regular basis - a logic model is meant to be a roadmap that can change as new information is gathered, projects and relationships are forged and refined, and so on.